

Non muscle invasive bladder tumors

Non-muscle invasive bladder tumor normally has a high recurrence rate, leading to multiple treatments. Elderly patients with multiple morbidities are not fit for conventional treatment under general anesthesia. TULA® DUAL offers a technique using flexible cystoscopy for the treatment of bladder tumor under local or even no anesthesia in outpatient settings.

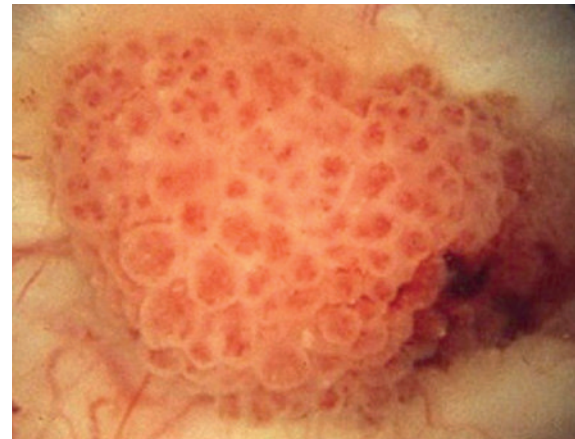
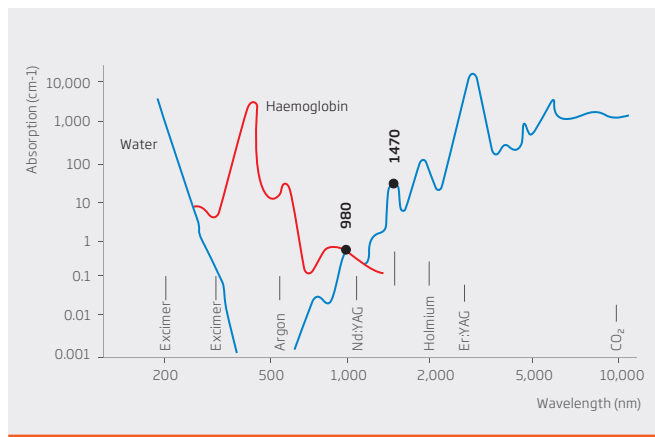
Advantages:

- Avoidance of the obturator-nerve reflex
- Specially designed fibers for best results
- Controlled and focussed penetration depth with less thermal spread
- Atraumatic fiber tip enables a smooth insertion and protects the working channel
- Dual concept for a matched penetration depth of tumor

Indications:

- Non muscle invasive bladder tumor
- Radiation cystitis

LEONARDO® DUAL with specially designed fibers combines the wavelengths of 980 nm and 1470 nm with high absorption in water and hemoglobin



LEONARDO®



Model	LEONARDO® Mini Dual
REF	SL980+1470 nm 14 W
Power / Wavelength	10 W (980 nm) / 4 W (1470 nm)
Fiber diameter	≥ 360 µm
Aiming beam	635 nm, max. 4 mW
Treatment mode	CW, pulse mode (optional)
Pulse duration / -break	0.01 – 60 sec / 0.01 – 60 sec
Power supply	110 – 240 VAC, 50 – 60 Hz (7.2 VDC @ 36 W)
Batteries	Li-ion batteries
Dimensions (H x W x D)	6 cm x 9 cm x 21.5 cm
Weight	900 g

Fiber

REF	Product
503100410	TULA® Fiber, IC