

HOLA[®] ELLA[®] LaEvita



Innovative Laser Therapies in Gynecology



More insights



- Precise
- Excellent hemostasis
- Versatile
- Working in non-contact or contact

biolitec® laser therapies in Gynecology

The biolitec® diode laser systems are characterized by a compact, maintenance-free design for effective and safe use in surgery. For almost 20 years biolitec® has been developing methods and procedures in many medical disciplines and offers established and sophisticated devices with a selection of optical fibers for different applications. The laser systems used worldwide are developed in Germany at the Bonn location and are characterized by high quality and safety standards. Whether in the operating room or in the outpatient OR center, the use of biolitec® diode lasers significantly expands the spectrum of users.

In gynecology, biolitec® offers a wide range of treatment options in both hysteroscopy and laparoscopy. Myomas, polyps, dysplasia, cysts

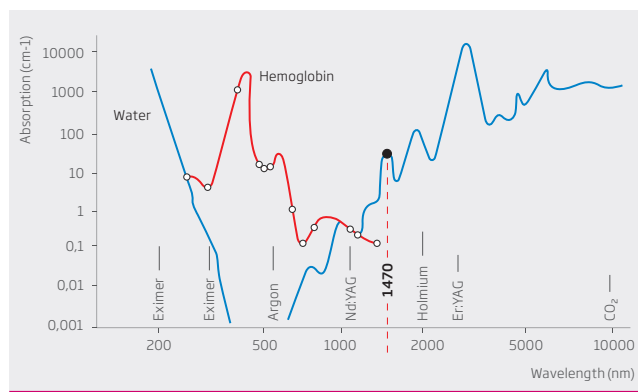
and condylomas can be treated by cutting, enucleation, vaporization and coagulation. Controlled cutting with laser light has hardly any effect on the uterine muscles and thus avoids painful contractions. The simultaneous coagulation guarantees excellent hemostasis and therefore a good view on the surgical field at all times. The defined penetration depth allows very precise and tissue-friendly working and is therefore the method of treatment with a great contribution to preserving fertility.

Easy to use, precise & versatile in

- **Hysteroscopy**
- **Laparoscopy and**
- **Minimally invasive surgery**

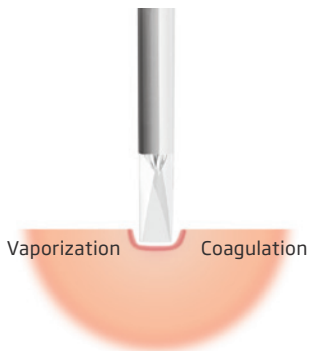
“Technology meets Anatomy”

The 1470 nm/980 nm wavelengths ensure high absorption in water and hemoglobin. The thermal penetration depth is significantly lower than, for example, the thermal penetration depth with Nd: YAG lasers. These effects enable safe and precise laser applications to be performed near sensitive structures while providing thermal protection of the surrounding tissue. Compared to the CO₂ laser, these special wavelengths offer significantly better hemostasis and prevent major bleeding during surgery, even in hemorrhagic structures.

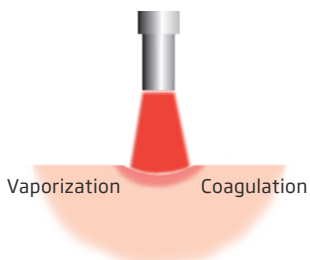


Absorption of laser beam in hemoglobin and water

Contact Mode



Non-Contact Mode



With thin, flexible glass fibers you have very good and precise control of the laser beam. The penetration of laser energy into deep structures is avoided and surrounding tissue is not affected. Working with quartz glass fibers in non-contact and contact offers tissue-friendly cutting, coagulation and vaporization.

LEONARDO® DUAL

Easy

- Easy handling
- Reduced surgery time

Safe

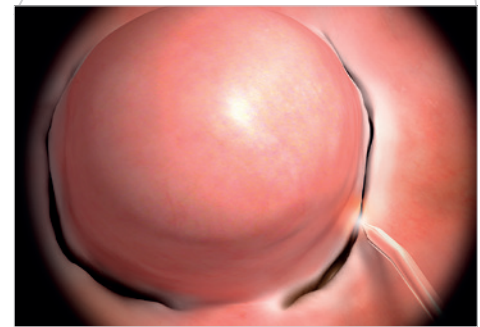
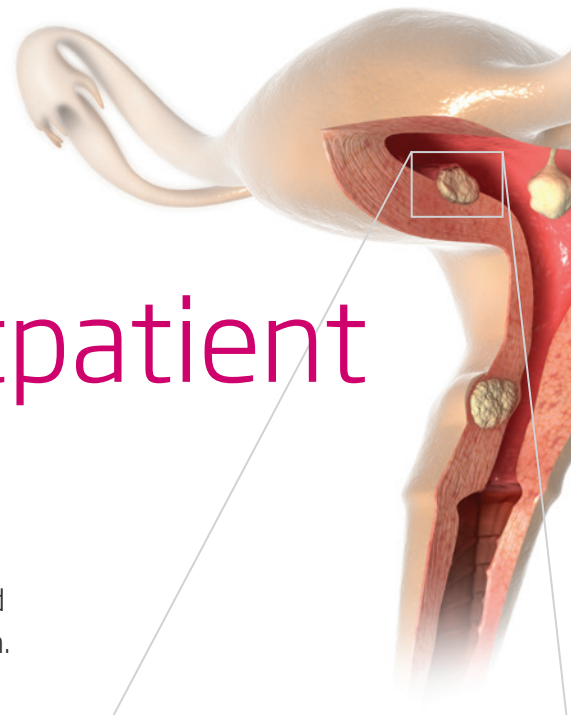
- Intuitive interface
- RFID for sterility assurance
- Defined penetration depth

Flexible

- Contact or non-contact with tactile feedback
- Cutting, coagulation, hemostasis

HOLA® – Hysteroscopic Outpatient Laser Application

The gentle and, above all, uterine preserving treatment of polyps and myomas is especially important for women who wish to have children. Polyps and myomas can be enucleated quickly and gently with the MyoFiber® CA and MyoFiber® CC. The use of standard diagnostic hysteroscopes with small diameter allows direct treatment during diagnosis. The laser energy avoids contraction of the uterine muscles and can therefore be used without or under minimal local anesthesia. In addition, in the treatment of the uterine septum, the laser may be a more conservative technique that can maintain the muscular integrity of the uterus without weakening the myometrium. This can be a great advantage in women who wish to have children after surgical treatment.



Enucleation of a myoma with MyoFiber® CC

Applications

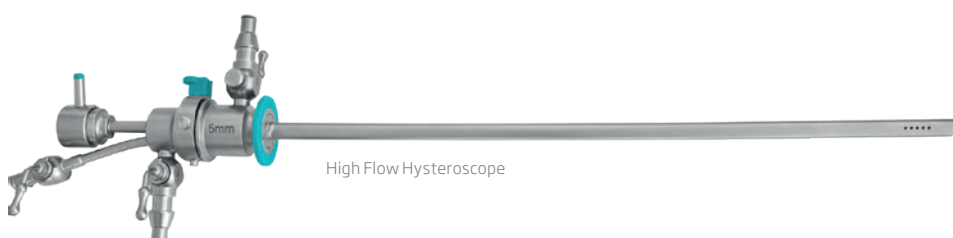
- Polyp
- Myoma
- Septum
- Isthmocele

Advantages

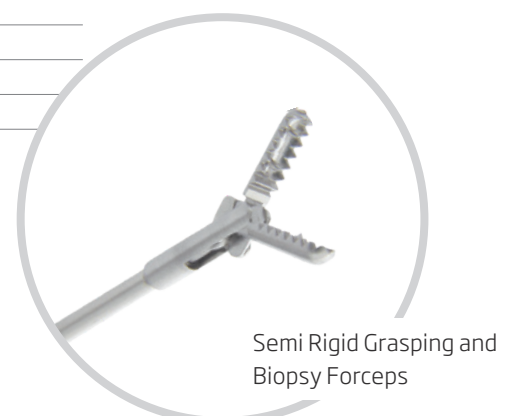
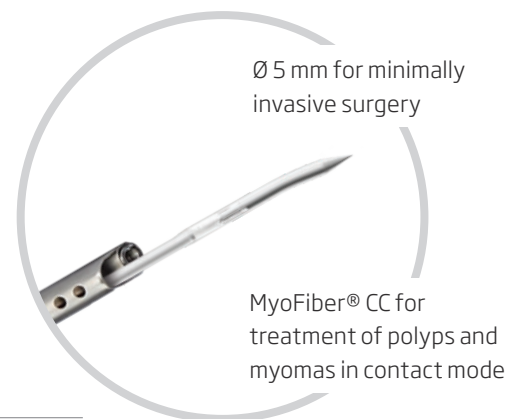
- Safe working in saline solution
- Outpatient possible without anesthesia
- Use of standard instruments
- Almost painless for patients

Instruments and fibers

REF	Product
400400130	continuous flow outer sheath Ø 5,0mm; FL 216mm turquoise
400400140	inner sheath with 5 Fr. working channel; turquoise
400400150	Biopsy grasping-forceps semi-rigid, oval, double action Ø 1,6mm, 5 Fr., 340mm
400400160	ENDOSCOPIC SEAL
400500130	ASAP Hysteroscope optics HD, 2.9mm, 30°, 300mm
503200760	MyoFiber® CC, IC
503200770	MyoFiber® CA, IC



High Flow Hysteroscope



ELLA® – Endometriosis Laparoscopic Laser Application

Discover the new
Laparoscopic Bending
Instrument to direct the
laser fiber to wherever it is
needed, for even more
effective surgery!



Endometriosis is one of the main causes in women of infertility and abdominal pain. biolitec® has developed an innovative technique to preserve fertility in women. The laser effectively vaporizes endometriotic lesions without altering ovarian function and sparing the number of available follicles.

Applications

- Deep Infiltrating Endometriosis
- Ovarian Endometriomas
- Adhesiolyses
- Salpingectomy
- Ovarian Cysts
- Twin-to-Twin Syndrome TTTS

Advantages

- Working in non-contact or contact with tactile feedback
- Defined penetration depth without impact on surrounding tissue
- Preservation of ovarian reserve and fertility
- Excellent hemostasis
- Reduced scarring and avoidance of adhesions



Endometriosis, ovarian cyst

Instruments and fibers

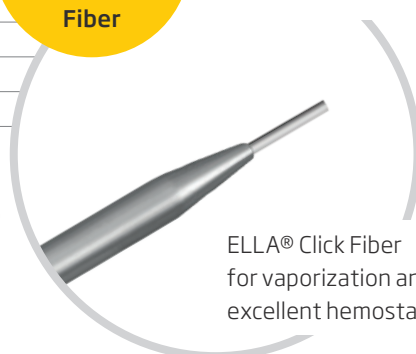
REF	Product
400400110	Laparoscopic sheath 30 cm
400400115	Laparoscopic sheath 40 cm
400400120	Laparoscopic Bending Instrument
503200600	ELLA® Click Fiber, IC
503200775	MyoFiber® CS, IC



ELLA® Click Fiber and Laparoscopic bending instrument

Get
maximum
security with
ELLA® Click
Fiber

Laparoscopic sheath
Ø 5 mm for all standard trocars



ELLA® Click Fiber
for vaporization and
excellent hemostasis



NEW

LaEvita

The laser treatment of genito-urinary syndrome of the menopause

biolitec® has the complete solution to the main disorders affecting the female reproductive system.

Applications

- Vaginal atrophy
- Mild stress urinary incontinence
- Recurrent infections

Advantages

- It significantly reduces vaginal dryness and pain without side effects
- It helps maintain a fulfilling intimate life
- Fully outpatient procedure
- No anesthesia required
- No side effects
- Effective
- Almost no pain
- No downtime

Instruments and fibers

REF	Product	REF	Product
400500400	LaEvita Small	400500430	LaEvita Handpieces Set
400500410	LaEvita Medium	503200610	Vaginal Atrophy LaEvita Kit, IC
400500420	LaEvita Large	503200620	Urinary Incontinence LaEvita Kit, IC

Minimally invasive surgery

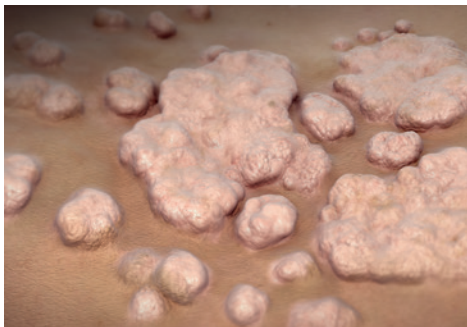
Laser surgery is also excellently suited for the treatment of condylomas or dysplasia in the areas of vulva, vagina and cervix. The defined penetration depth of the laser energy is less invasive, leading to fewer complications and a quick recovery of the patients.

Applications

- Condyloma
- Cervical Ectropion
- Vulvar and Cervical Dysplasia

Advantages

- Precise cutting and coagulation
- Short rehabilitation time
- Almost blood-free procedure



Condylomata acuminata

Instruments and fibers

REF	Product
400100100	Universal Dual Luer Handpiece
503200775	Myofiber CS, IC
AB2594	Biopsy Needle
503200970	LOMA Focus Handpiece



Universal Dual Luer Handpiece



LOMA Focus Handpiece

LEONARDO®

One device for multiple applications
in Gynecology

LEONARDO® DUAL 45
The complete solution
for gynecology and more



LEONARDO® Mini
For hysteroscopy
and condylomas



LEONARDO®

LEONARDO® DUAL 45

INVISIBLE LASER RADIATION
AVOID EYE OR SKIN EXPOSURE TO
DIRECT OR INDIRECT RADIATION

CLASS 4 LASER PRODUCT

Diode-Laser 980 +/- 30 nm CW 30 W (Max.)
Diode-Laser 1470 +/- 30 nm CW 15 W (Max.)
EN 60825-1:2008 IEC 60601-2-22:2007

VISIBLE LASER RADIATION
AVOID EYE EXPOSURE TO DIRECT RADIATION

CLASS 3R LASER PRODUCT

Diode-Laser 635 +/- 10 nm CW 4 mW (Max.) (Aiming)
Diode-Laser 532 +/- 10 nm CW 1 mW (Max.) (Aiming)
EN 60825-1:2008 IEC 60601-2-22:2007

LEONARDO® Mini Dual

INVISIBLE LASER RADIATION
AVOID EYE OR SKIN EXPOSURE TO
DIRECT OR INDIRECT RADIATION

CLASS 4 LASER PRODUCT

Diode-Laser 980 +/- 30 nm CW 13 W (Max.)
Diode-Laser 1470 +/- 30 nm CW 5 W (Max.)
EN 60825-1:2007 IEC 60601-2-22:2007

VISIBLE LASER RADIATION
AVOID EYE EXPOSURE TO DIRECT RADIATION

CLASS 3R LASER PRODUCT

Diode-Laser 635 +/- 10 nm CW 4 mW (Max.) (Aiming)
EN 60825-1:2007 IEC 60601-2-22:2007

CE 1984

CeramOptec GmbH
Siemensstr. 44, D-53123 Bonn

Model	LEONARDO® Mini Dual	LEONARDO® DUAL 45
REF	SL980 + 1470 nm 16 W	SL980 + 1470 nm 45 W
Wavelength	980 nm and 1470 nm	980 nm and 1470 nm
Power	11 W (980 nm) / 5 W (1470 nm)	45 Watt (1470 nm / 15 Watt + 980 nm / 30 Watt), separately adjustable
Fiber diameter	≥ 360 µm	≥ 360 µm
Aiming beam	635 nm, max. 4 mW	532 nm and 635 nm, green 1 mW, red 4 mW, user controlled intensity
Treatment mode	CW, Pulse Mode (optional)	CW, Pulse Mode, ELVeS® Signal, ELVeS® Segment, Derma Mode
Pulse duration /-break	0.01 – 180 sec / 0.01 – 180 sec	0.01 – CW / 0.01 – 60 sec
Power supply	110 – 240 VAC, 50 – 60 Hz (12 VDC Max 100 W)	110 – 240 VAC, 50 / 60 Hz, 450 VA
Batteries	Li-ion batteries	–
Dimensions (H x W x D)	6.0 cm x 9.0 cm x 21.5 cm	approx. 28 cm x 37 cm x 9 cm
Weight	900 g	approx. 8.5 kg

All laser sets incl. 3 safety goggles, foot switch, interlock connector, power cord and manual in a carrying case.

Contact us

to learn more about a whole new world
of minimally invasive laser therapies

For more insights



biolitec® worldwide

biolitec AG

Vienna, Austria
phone: +43 1 3619 909 50
info@biolitec.de
www.biolitec.com

biolitec biomedical technology GmbH

Jena, Germany
Phone: +49 3641 519 53 0

biolitec Schweiz GmbH

Wollerau, Switzerland
Phone: +41 55 555 30 20

biolitec España

Madrid, Spain
Phone: +34 91 9910857

biolitec Italia SRL

Milano, Italy
Phone: +39 02 8423 0633

biolitec Tıbbi Cihazları Ltd. Şti.

Istanbul, Turkey
Phone: +90 216 574 7456

OOO biolitec Spb

Saint-Petersburg, Russia
Phone: +7 812 4493752

biolitec FZ LLC

Dubai, UAE
Phone: +971 44 29 85 92

biolitec laser science and technology Shanghai Ltd.

Shanghai, China
Phone: +86 21 6308 8856

biolitec Sdn. Bhd.

Selangor, Malaysia
Phone: +60 3 5569 7158

biolitec India Private Ltd.

Bangalore, India
Phone: +91 93275 11005

PT. Biolitec

Tangerang, Indonesia
Phone: +62 21 537 2994

biolitec Korea Ltd.

Seoul, Republic of Korea
Phone: +82 2 701 4707

Equipos Laser de Uso Medico y Fibra Optica SA de CV

México City, Mexico
Phone: +52 155 55 731800

biolitec BCIE LTDA

São Paulo, Brazil
Phone: +55 11 2093 8602

CeramOptec GmbH

Bonn, Germany
Phone: +49 228 979670

Ceram Optec SIA

Riga, Latvia
Phone: +371 653 25 994



All fibers are free of latex and DEHP. Our fibers are single use products (unless otherwise indicated) delivered sterile for immediate use.

Imprint

biolitec AG
Untere Viaduktgasse 6/9
A-1030 Wien
Phone: +43 1 3619 909 50
www.biolitec.com